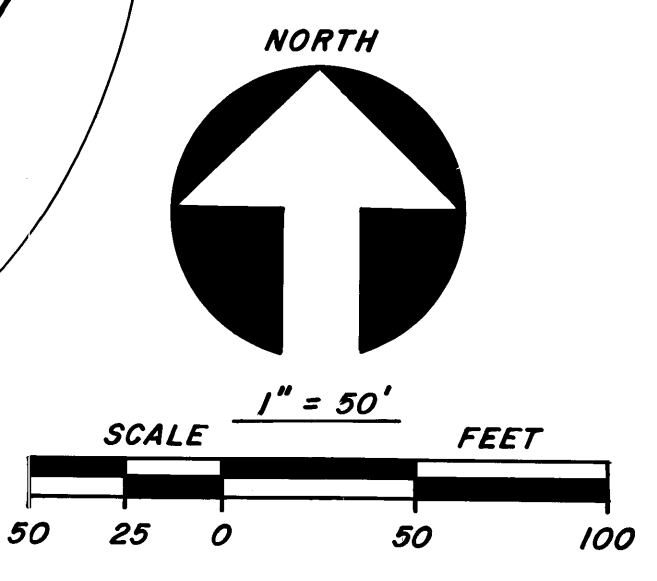
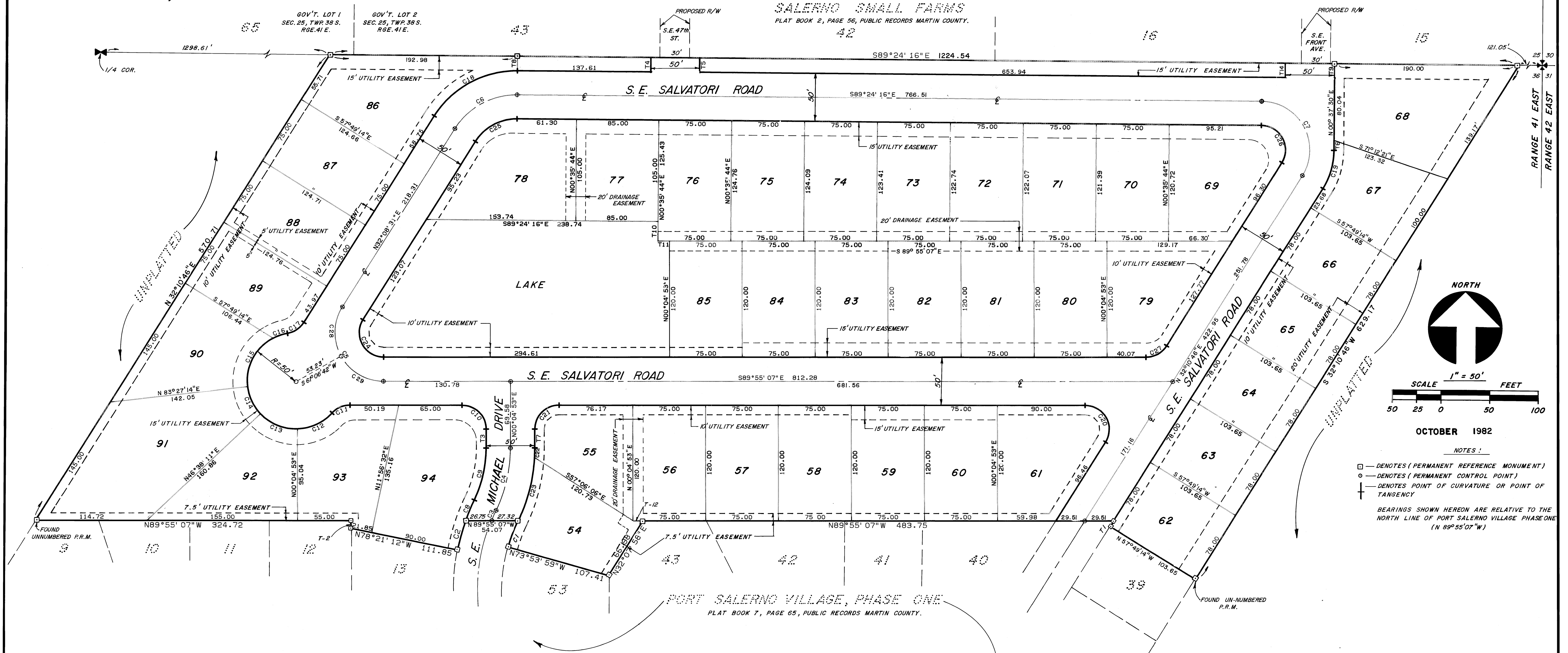


PORT SALERNO VILLAGE, PHASE II

SECTION 36, TOWNSHIP 38 SOUTH, RANGE 41 EAST MARTIN COUNTY, FLORIDA.

SALERNO SMALL FARMS
PLAT BOOK 2, PAGE 56, PUBLIC RECORDS MARTIN COUNTY.



NOTES:
 □ DENOTES (PERMANENT REFERENCE MONUMENT)
 ○ DENOTES (PERMANENT CONTROL POINT)
 † DENOTES POINT OF CURVATURE OR POINT OF TANGENCY
 BEARINGS SHOWN HEREON ARE RELATIVE TO THE NORTH LINE OF PORT SALERNO VILLAGE PHASE ONE (N 89°55'07"W)

CURVE TABLES

NO	BEARING	CHORD	DELTA	RADIUS	LENGTH	TAN
C1	N20°51'22"E	29.02	9°30'41"	175.00	29.05	14.56
C2	S15°39'24"W	31.47	8°01'13"	225.00	31.50	15.77
C3	N23°55'27"E	11.78	3°22'31"	200.00	11.78	5.89
C4	N12°50'48"E	66.29	25°31'49"	150.00	66.84	33.98
C5	N28°53'18"W	87.49	122°03'38"	50.00	106.52	90.31
C6	N61°22'07"E	73.24	58°27'13"	75.00	76.52	41.96
C7	S67°49'14"E	87.29	121°05'03"	50.00	106.10	89.44
C8	N22°38'22"E	53.33	5°56'41"	225.00	53.35	11.68
C9	N12°50'48"E	55.24	25°31'49"	125.00	55.70	28.32
C10	N44°55'07"W	35.36	90°00'00"	25.00	39.27	25.00
C11	S65°59'12"W	20.41	48°11'23"	25.00	21.03	11.18
C12	S64°53'36"W	39.08	46°00'12"	50.00	40.15	21.23
C13	N67°44'03"W	41.26	48°44'29"	50.00	42.54	22.65
C14	N24°57'17"W	31.58	36°49'03"	50.00	32.13	16.64
C15	N27°43'20"E	56.31	68°32'12"	50.00	59.81	34.07
C16	N71°09'40"E	15.94	18°20'28"	50.00	16.01	8.07
C17	N56°14'12"E	20.41	48°11'23"	25.00	21.03	11.18
C18	N61°22'07"E	97.65	58°27'13"	100.00	102.02	55.95
C19	S15°24'08"W	40.78	31°59'16"	75.00	41.30	21.19
C20	N28°52'10"W	43.75	122°05'53"	25.00	53.28	45.19
C21	S45°04'53"W	35.36	90°00'00"	25.00	39.27	25.00
C22	S01°43'05"W	10.00	3°16'27"	175.00	10.00	5.00
C23	S14°29'01"W	67.55	22°15'23"	175.00	67.98	34.42
C24	N28°53'18"W	43.74	122°03'38"	25.00	53.26	45.16
C25	N61°22'07"E	48.83	58°27'13"	50.00	51.01	27.97
C26	S28°36'45"E	43.64	121°35'03"	25.00	53.06	44.72
C27	S61°07'50"W	24.20	57°54'01"	25.00	25.26	13.83
C28	S0°37'36"W	50.78	61°01'49"	50.00	53.26	29.47
C29	S69°24'13"E	50.78	61°01'49"	50.00	53.26	29.47

TANGENT TABLES

NO	BEARING	DISTANCE
T1	N32°10'46"E	6.42
T2	N00°04'53"E	7.89
T3	N00°04'53"E	19.58
T4	N00°35'44"E	15.00
T5	S00°35'44"W	15.00
T6	S00°37'30"W	10.00
T7	S00°04'53"W	19.58
T8	N00°35'44"E	15.00
T9	N00°37'30"E	15.00
T10	N00°35'44"E	20.43
T11	S89°55'07"E	11.92
T12	S89°55'07"E	10.23
T13	N32°07'58"E	66.98
T14	N00°37'30"E	15.00